

Presidential Plaza West North Lauderdale, FL	1 Mile Radius	3 Mile Radius	5 Mile Radius
---	---------------	---------------	---------------

### Current Year Demographics

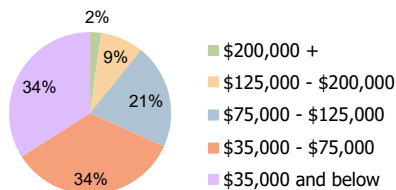
Current Population	24,586	181,060	445,760
Total Daytime Pop	18,461	152,301	446,196
Workplace Pop	4,744	59,022	188,832
Average Household Income	\$56,628	\$66,023	\$68,831
Average Disposable Income	\$50,165	\$56,632	\$58,414
Total Households	8,335	70,613	175,213
Median Home Value	\$303,645	\$338,613	\$336,051
College (4+)	16.2%	24.4%	27.0%
Total Consumer Spending/Capita (Weekly)	\$374	\$382	\$384
Population per Household	2.13	2.01	2.47
% of Households with Children	25.4%	26.5%	26.9%

### 2025 Demographic Projections

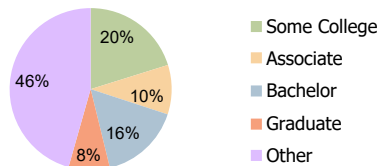
Projected Population	24,782	183,518	452,071
Projected 5 Year Annual Growth Rate (Pop)	0.2%	0.3%	0.3%

### Hispanic Ethnicity

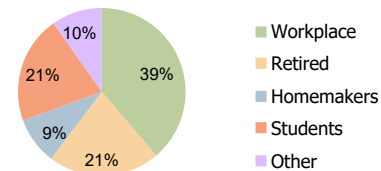
25% Hispanic | 75% Non Hispanic



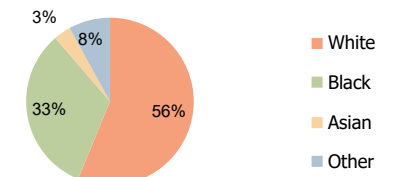
Household Income (3-Mile)



Education (3-Mile)



Daytime Population (3-Mile)



Race (3-Mile)

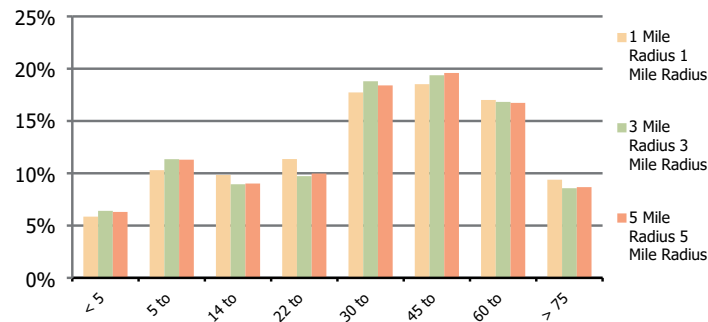
**Presidential Plaza West**  
North Lauderdale, FL

**1 Mile Radius**

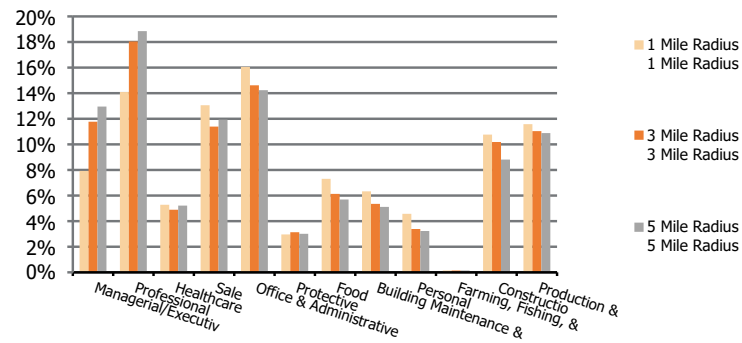
**3 Mile Radius**

**5 Mile Radius**

**Population by Age Range**



**Occupation**



<b>Population</b>	Current Estimated Population	24,586	181,060	445,760
	2010 Census Population	22,765	164,791	405,240
	2000 Census Population	23,076	163,818	389,322
	Historical Annual Growth 2000 to 2010	-0.1%	0.1%	0.4%
	Estimated Annual Growth 2010 to 2020	0.8%	0.9%	0.9%
	Projected Annual Growth 2020 to 2025	0.2%	0.3%	0.3%
<b>Ethnic</b>	Hispanic or Latino Population	24%	25%	22%
	Non Hispanic or Latino Population	76%	75%	78%
<b>Race</b>	White	45.3%	56.2%	54.2%
	Black or African American	43.2%	32.5%	35.3%
	Asian & Pacific Islander	3.5%	3.3%	3.4%
	Other Races	8.0%	8.0%	7.1%