



# Demographic Summary Report

2000, 2010 Census, 2019 Estimates & 2024 Projections

Calculated using TAS Retrieval

## Shops at Palm Lakes

Miami, FL

### 1 Mile Radius

### 3 Mile Radius

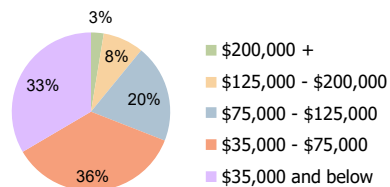
### 5 Mile Radius

## Current Year Demographics

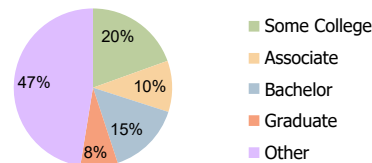
Current Population	29,176	175,556	484,765
Total Daytime Pop	22,756	150,482	415,003
Workplace Pop	5,389	47,585	141,299
Average Household Income	\$54,880	\$65,786	\$62,554
Average Disposable Income	\$48,620	\$56,328	\$54,060
Total Households	9,240	55,066	157,789
Median Home Value	\$351,987	\$375,719	\$365,651
College (4+)	20.4%	22.6%	21.3%
Total Consumer Spending/Capita (Weekly)	\$348	\$355	\$354
Population per Household	2.13	2.01	2.47
% of Households with Children	37.6%	35.8%	32.5%

## 2024 Demographic Projections

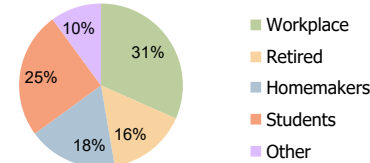
Projected Population	29,934	182,484	507,023
Projected 5 Year Annual Growth Rate (Pop)	0.5%	0.8%	0.9%



Household Income (3 Mile Radius)



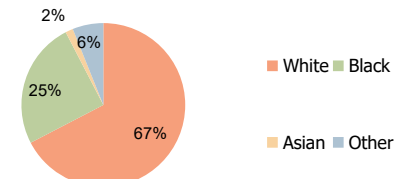
Education (3 Mile Radius)



Daytime Population (3 Mile Radius)

## Hispanic Ethnicity

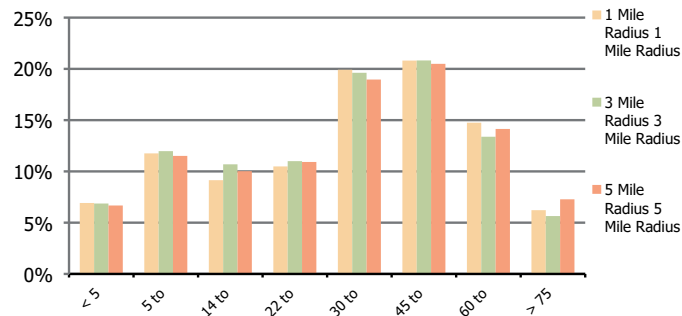
68% Hispanic | 32% Non Hispanic



Race (3 Mile Radius)

Shops at Palm Lakes Miami, FL		1 Mile Radius	3 Mile Radius	5 Mile Radius
Population	Current Estimated Population	29,176	175,556	484,765
	2010 Census Population	27,273	161,433	437,044
	2000 Census Population	27,878	133,657	377,357
	Historical Annual Growth 2000 to 2010	-0.2%	1.9%	1.5%
	Estimated Annual Growth 2010 to 2019	0.7%	0.9%	1.1%
	Projected Annual Growth 2019 to 2024	0.5%	0.8%	0.9%
Ethnic	Hispanic or Latino Population	76%	68%	60%
	Non Hispanic or Latino Population	24%	32%	40%
Race	White	72.5%	67.4%	60.9%
	Black or African American	18.9%	25.0%	31.5%
	Asian & Pacific Islander	1.5%	1.5%	1.9%
	Other Races	7.1%	6.1%	5.7%

**Population by Age Range**



**Occupation**

